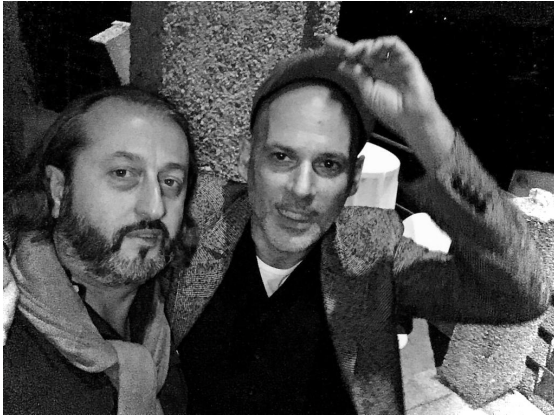


COLT
ARCHITECTS

COLT
ARCHITECTS



Matteo Caimi and Pierluigi Colombo

In 2021 Matteo Caimi cofounded with his childhood friend Pierluigi Colombo, COLT Architects, a dynamic architecture and design firm based in Milan.

With a shared vision for innovative design and a commitment to excellence, COLT Architects bring a wealth of experience and creativity to every project that they undertake.

They envision spaces that transcend the ordinary in the fields of; **Architecture, Interiors, Art Direction and Product Design** including ; Residential ,Commercial and Office design.

Also,their part of vision is to work with **"Multifunctional Spaces"** to increase the marketability and the efficiency of the projects by expanding the traditional layouts through new flexible design concepts.

Matteo Caimi studied and graduated in Architecture from the Polytechnic University of Milan, becoming a Member of the Order of Architects of Milan from 1998.

After graduating, he joined the architecture firm C&A and became a partner, after many years of apprenticeship within the company. Alongside with the Italian activity, C&A+Partners developed a series of residential and showroom projects in several American cities, such as New York, Philadelphia, Miami, Atlanta, Chicago, Los Angeles and Phoenix.

Over the years the design practise has ranged from the residential sector to the development of whole concepts for schools, hotels, sport facilities, industrial complex, banks, shops, showrooms, exhibitions, temporary installations and yachts.

Often the Studio has even been called to take care of the interiors, developing solutions that both use standard and custom designed pieces within each project.

Beginning from 2008, Matteo Caimi also plays the role of Director of Architecture at the Atlanta Design Festival.

From 2012 to 2017, after managing the design and the construction, Matteo Caimi became Art Director of Studio 3125, an Interior Design showroom with a purely European imprint, in Tempe, Arizona.

In 2018 Matteo Caimi has constituted MC Architecture & Design, continuing the path started at C&A, mainly dealing with residential architecture and interior design, alternating between Milan and the United States.

Born in Milan in 1969, **Pierluigi Colombo** studied Architecture at the “Kunst Akademie” of Copenhagen and at Polytechnic University of Milan, where he graduated in 1993. He collaborated as an Architect with the BDP Studio of Berlin between 1994 and 1995.

Pierluigi Colombo started developing the idea of multifunctional products and their design since 1996, when he became Art Director & Designer at Clei s.r.l., the world’s leader in transformable furniture. Their main research concerns product design and corporate identities, alongside with exhibition stand designs for global and local fairs and showrooms.

Colombo believes that understanding the potential of interior spaces is key and design must integrate multifunctional solutions in order to reach the maximum space efficiency.

With over 20 years of experience in global architecture and design, Colombo’s archive and portfolio are rich with solutions that fit every culture and lifestyle Including interior architecture, exhibition design at the most important international fairs and museums, communication and product design, (Interior innovation Award 2012, Red Dot Design Award 2013).

Among the Interiors Design Projects: the extension of a Penthouse in Mariano Co, a Penthouse in Varazze, the project of the Micro-Unit “LaunchPad” for the Exhibition “Making Room: New Models for Housing New Yorkers” at the Museum of the City of New York in 2013, the design of the apartment “The Open House” for the Show “Making Room, Housing for Changing America” at National Building Museum of Washington in 2017.

Interior Projects

Milan Italy Apartment

Apartment, Italy
Residential Project











Milan Italy Loft

Loft, Italy
Residential Project







New York NY Loft

Loft, USA
Residential Project











Milan Apartment

Apartment, Italy
Residential Project





NY Apartment

Apartment, USA
Residential Project







Meda Italy Apartment

Apartment, Italy
Residential Project











Meda Italy Apartment

Apartment, Italy
Residential Project



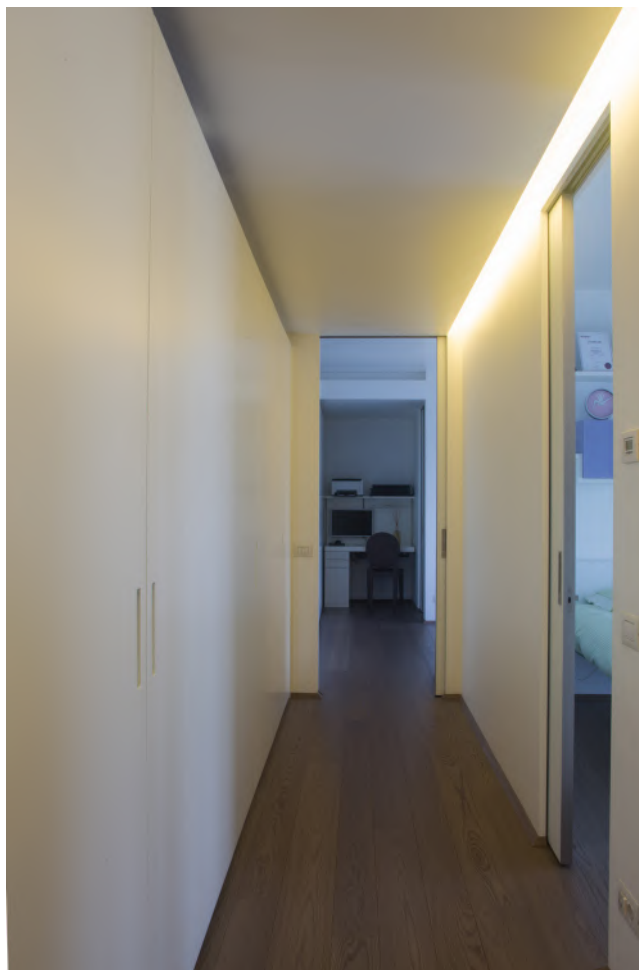


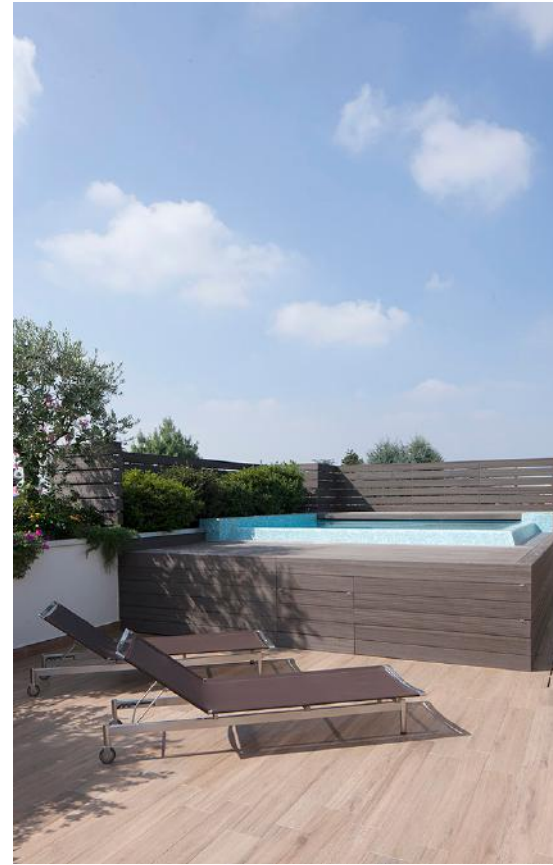














Cernobbio Apartment

Apartment, Italy
Residential Project













Varazze Apartment

Apartment, Italy
Residential Project









Milan Apartment

Apartment, Italy
Residential Project







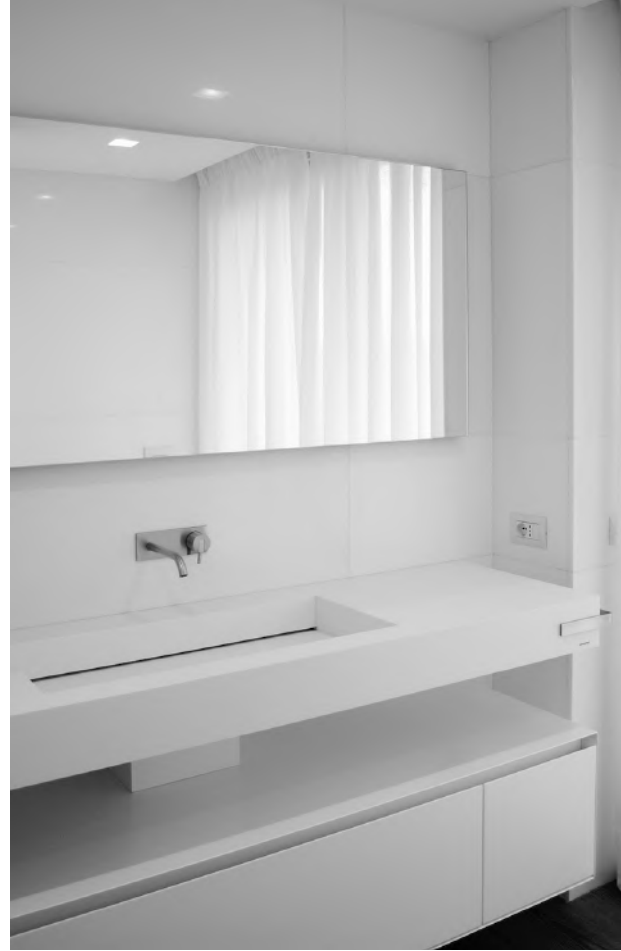


Monza Apartment

Apartment, Italy
Residential Project









Milan Apartment

Apartment, Italy
Residential Project





Phoenix AZ House Renovation

Residential House, USA
Residential Project







Atlanta GA Residential House

Residential House, USA
Residential Project









Italy Residential House

Residential House, Italy
Residential Project







New York Apartment

Apartment, USA
Residential Project





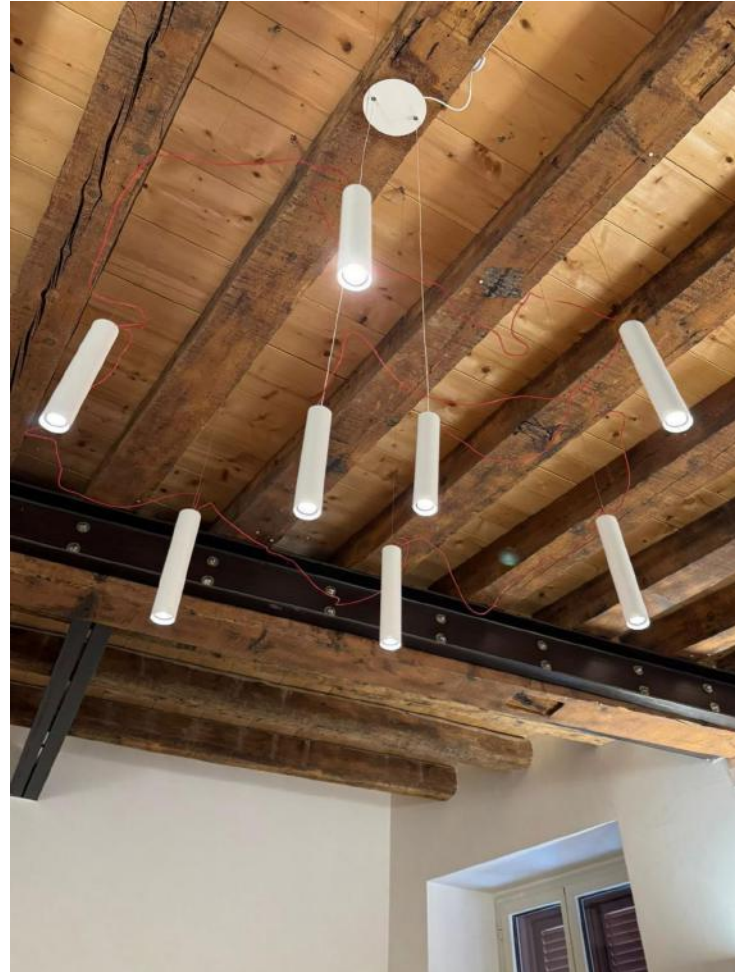


Milan Apartment

Apartment, Italy
Residential Project











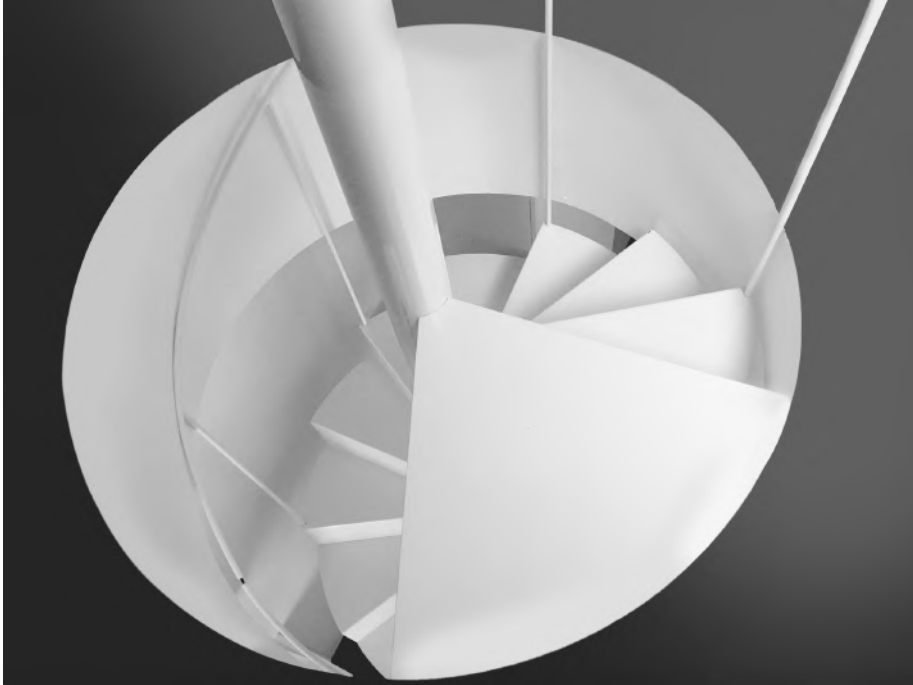
Milan Apartment

Apartment, Italy
Residential Project









Architectural Design

Paradise Valley AZ Residential House

Residential House, USA
Residential Project





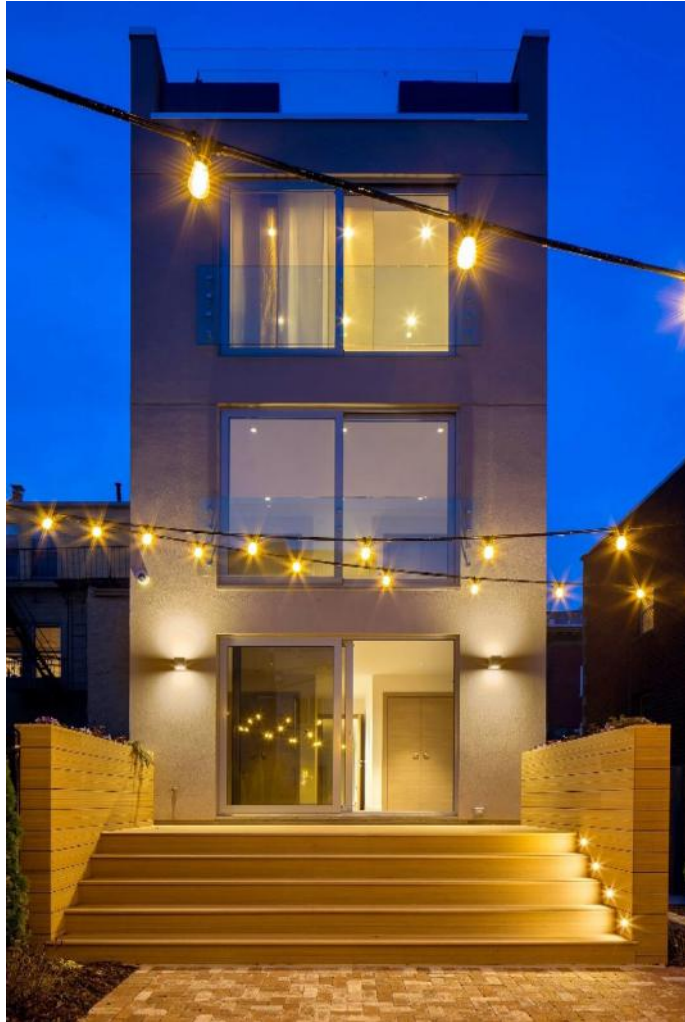




Williamsburg NY Apartment Complex

Apartment Complex, USA
Residential Project









Long Island NY Residential House

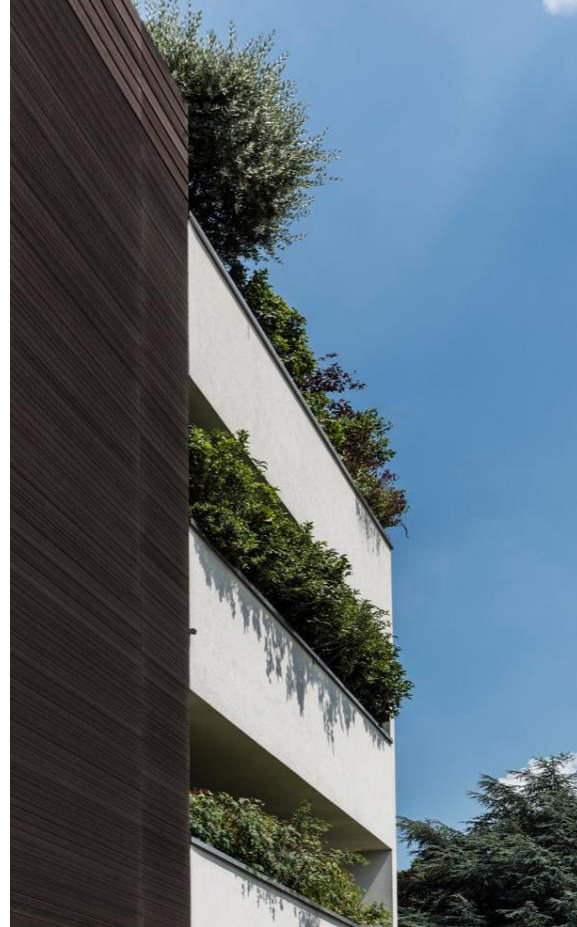
Residential House, USA
Residential Project





Meda Italy Apartment Complex

Apartment Complex, Italy
Residential Project









Meda Italy Apartment Complex

Apartment Complex, Italy
Residential Project







Barlassina Italy Residential House

Residential House, Italy
Residential Project







Long Island Residential House

Residential House, USA
Residential Project





Atlanta Residential House

Residential House, USA
Residential Project







Phoenix AZ House Renovation

Residential House, USA
Residential Project







Meda Italy House Renovation

Residential House, Italy
Residential Project





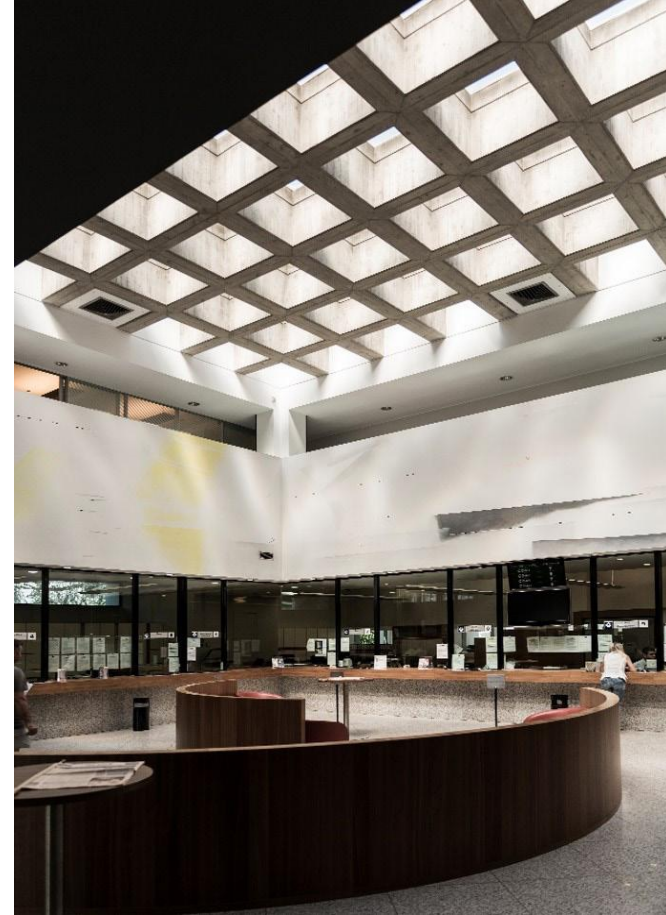
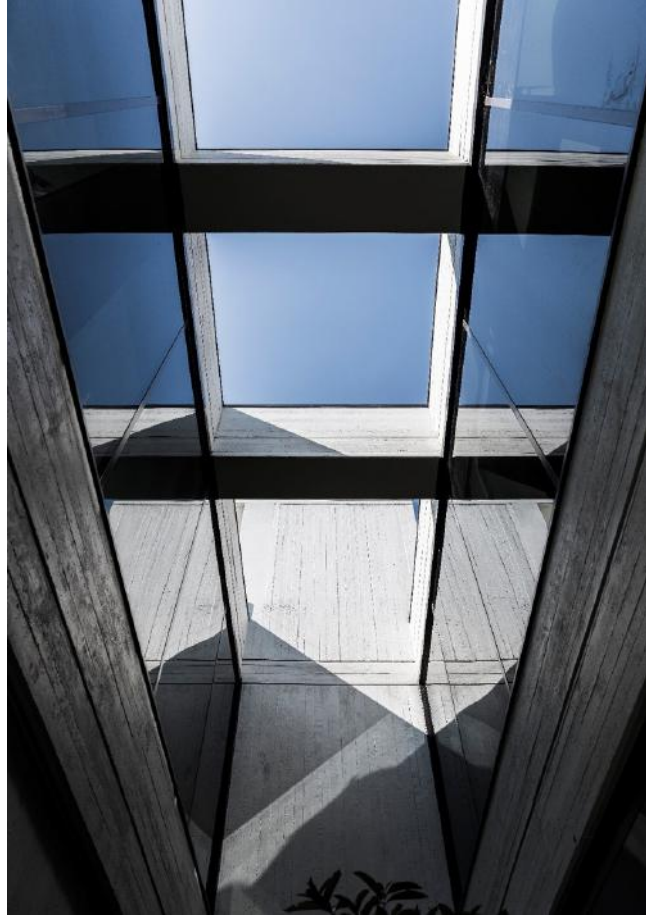
Barlassina Bank Headquarter

Bank, Italy
Commercial Project







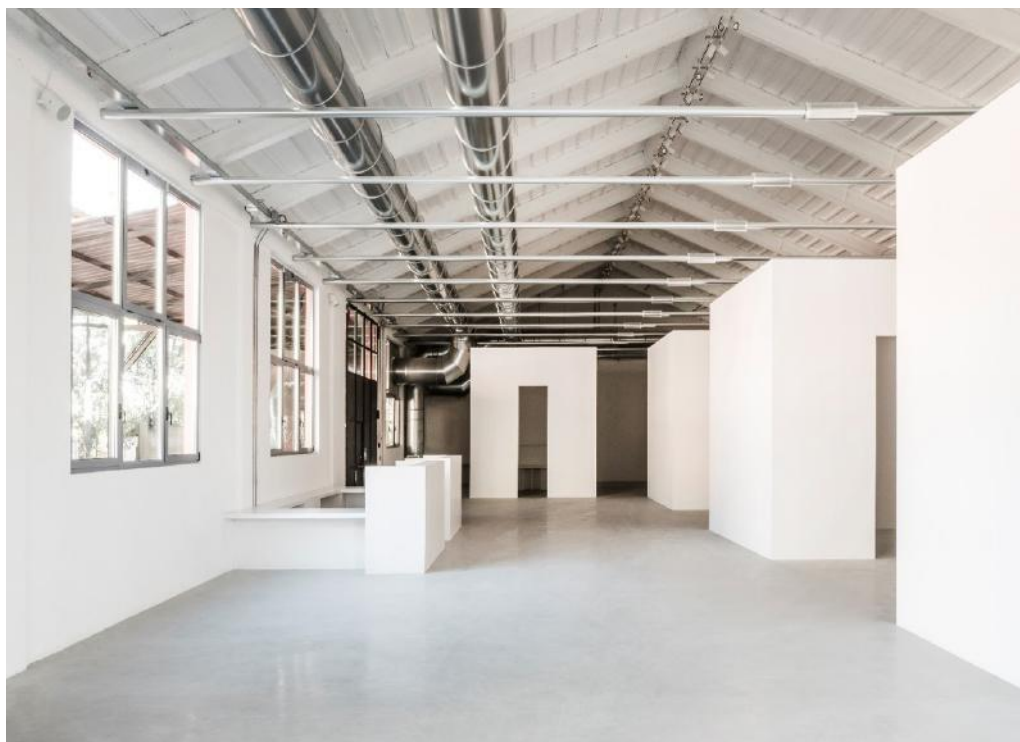


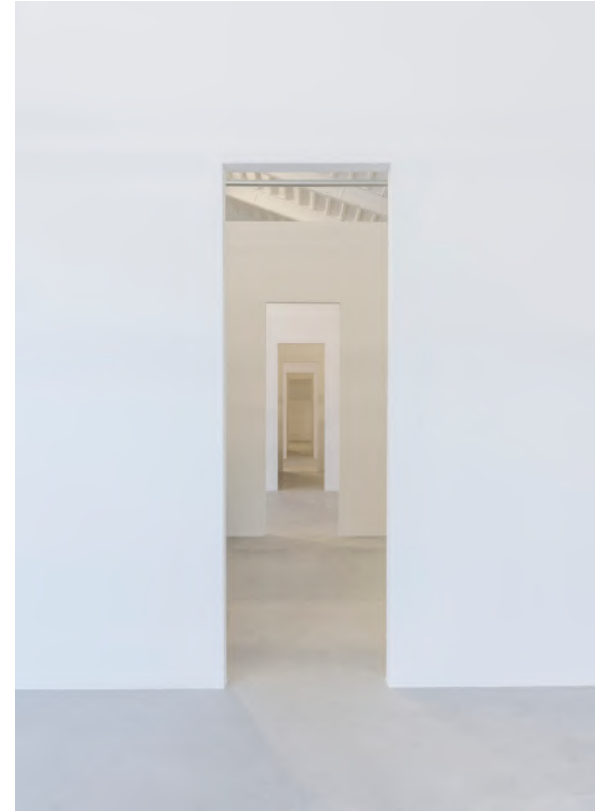
Exhibition Design

Space R 10

Showroom, Italy
Exhibition Design











Studio 3125 Tempe AZ

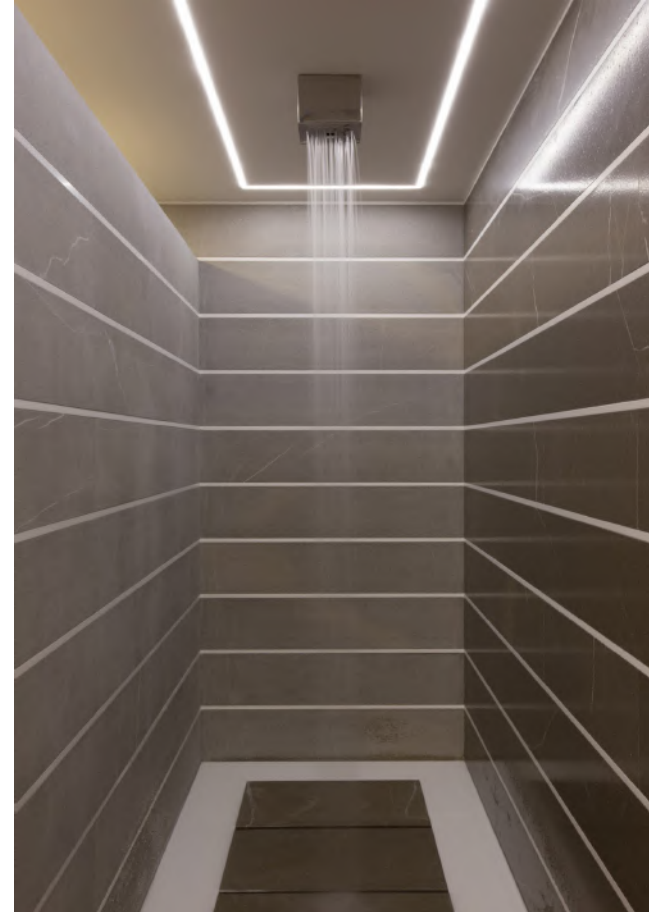
Showroom, USA
Exhibition Design



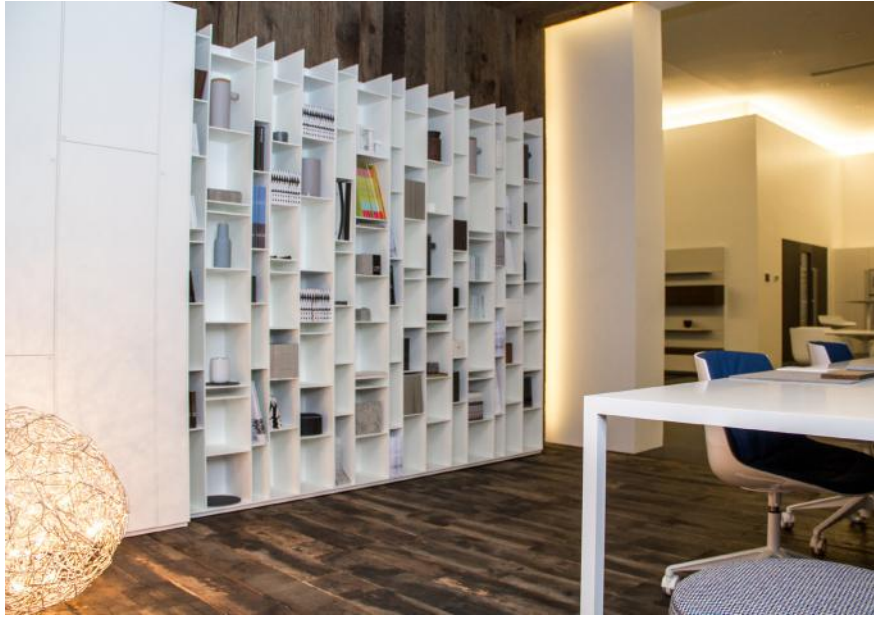












Vago Barlassina

Showroom, Italy
Exhibition Design





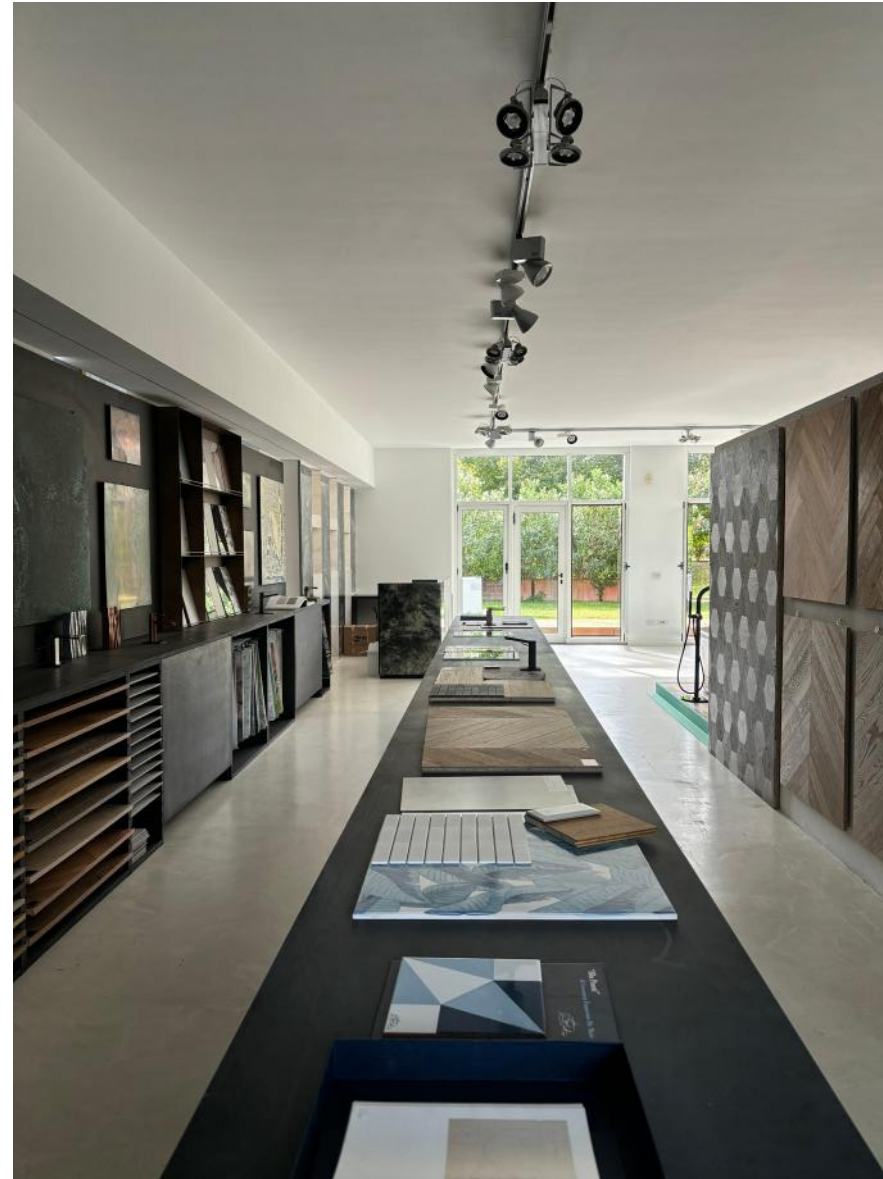






Milano Showroom

Showroom, Italy
Exhibition Design









Besana Showroom

Showroom, Italy
Exhibition Design







Cassina Showroom

Showroom, Italy
Exhibition Design





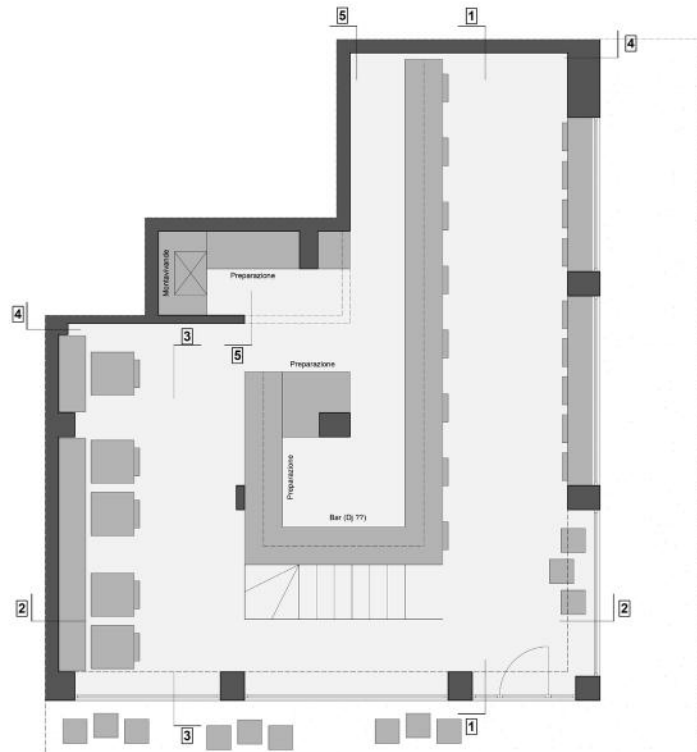


Commercial

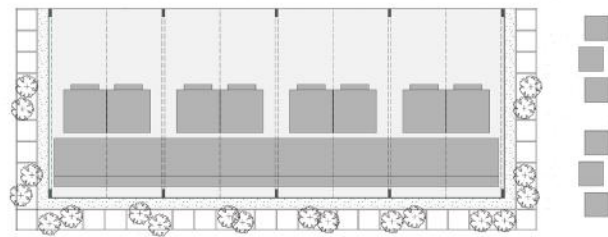
Milan Restaurant Concept

Restaurant, Italy
Commercial Project





PIANTA



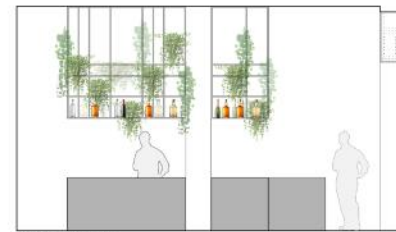
PIANTA



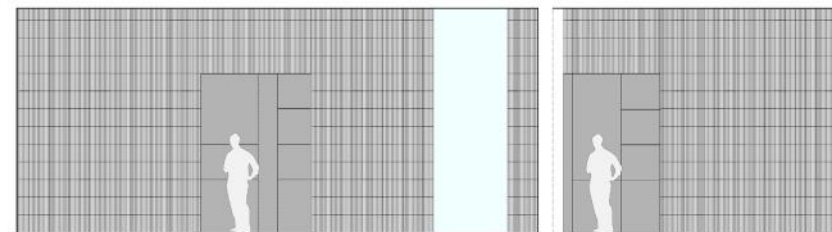
PROSPETTO 1



PROSPETTO 2



PROSPETTO 3



PROSPETTO 4

PROSPETTO 5







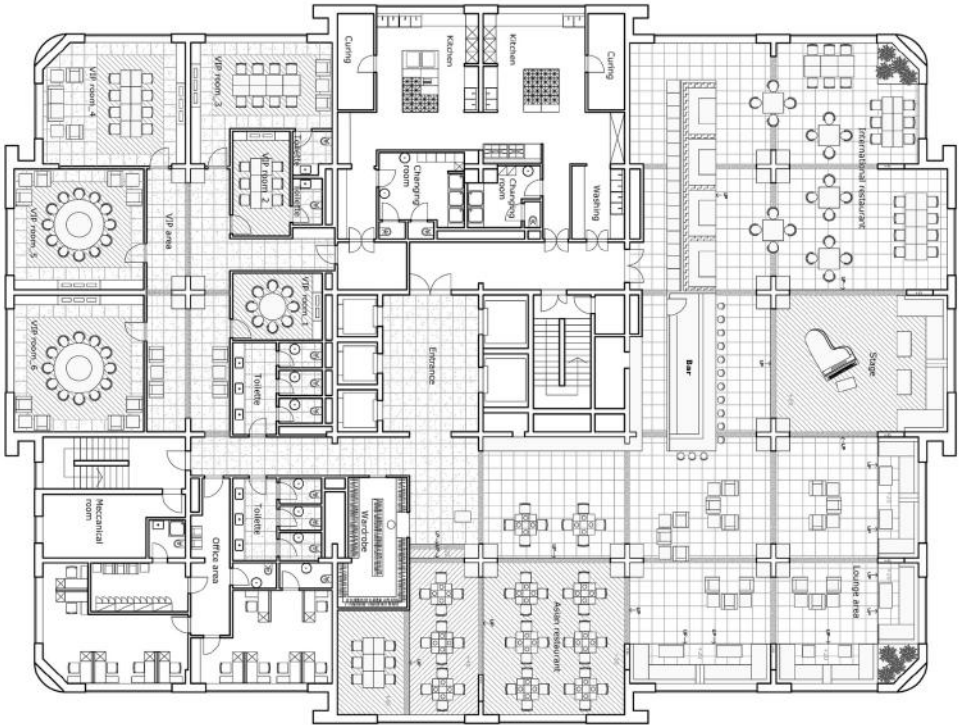




Ulaanbataar Restaurant Concept

Restaurant, Mongolia
Commercial Project

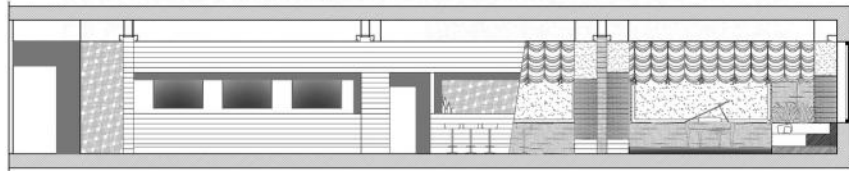
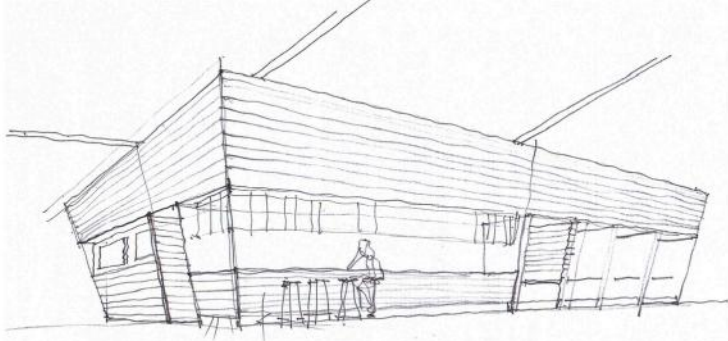
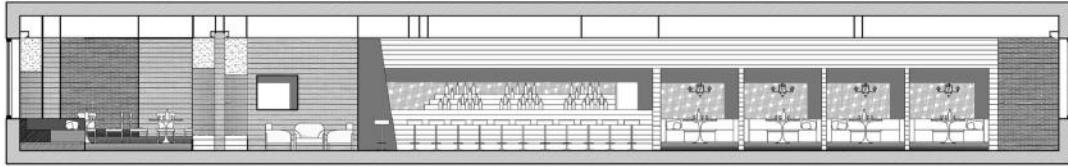




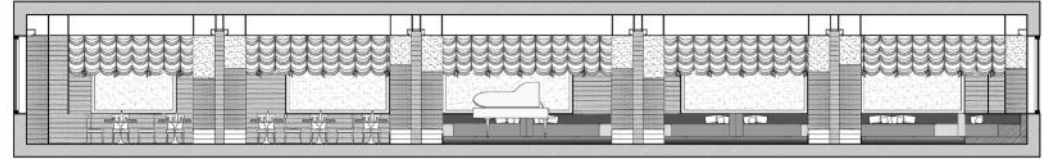




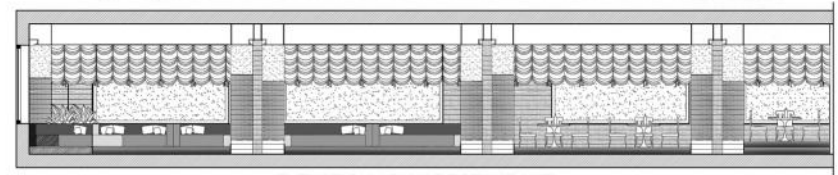
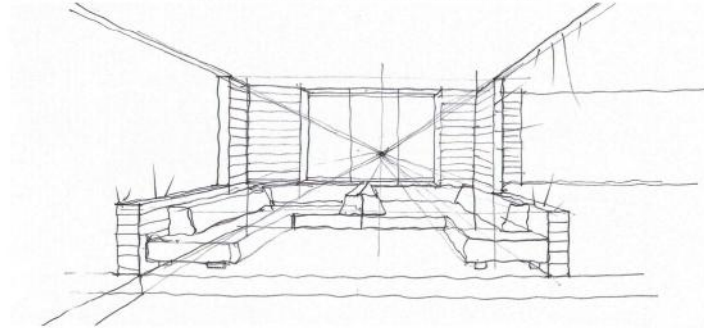




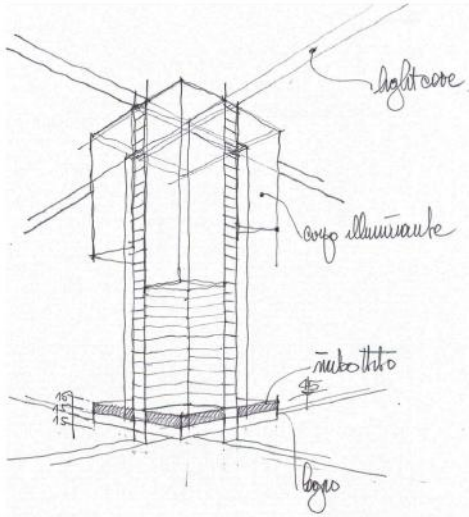
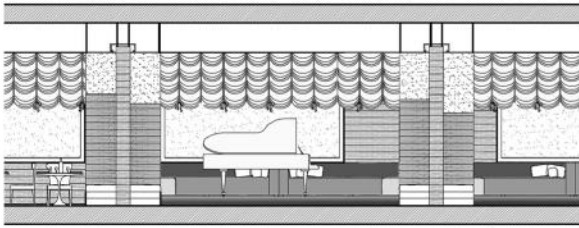
ELEVATION BAR AREA



ELEVATION INTERNATIONAL RESTAURANT



ELEVATION ASIAN RESTAURANT



COLUMN DETAIL



PRODUCTS



PRODUCTS



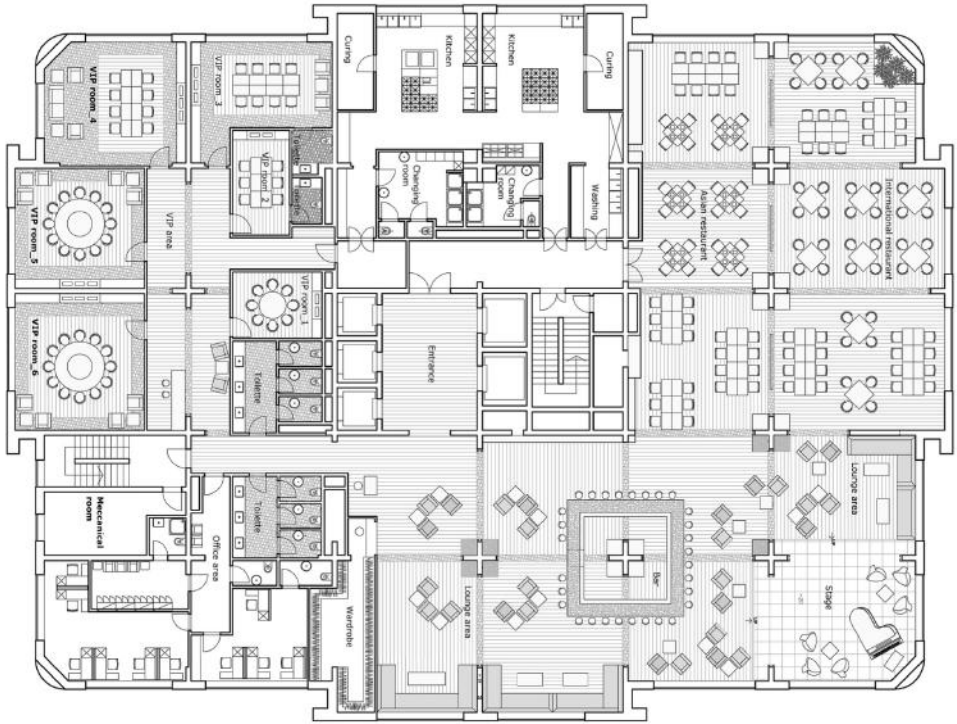
PRODUCTS



Ulaanbataar Restaurant Concept

Restaurant, Mongolia
Commercial Project

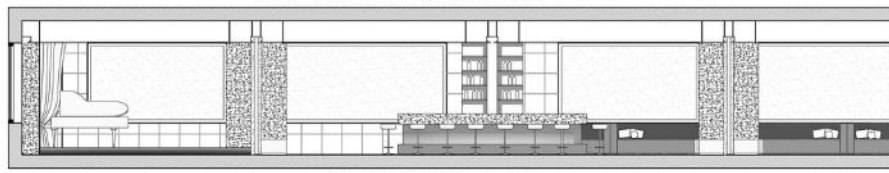
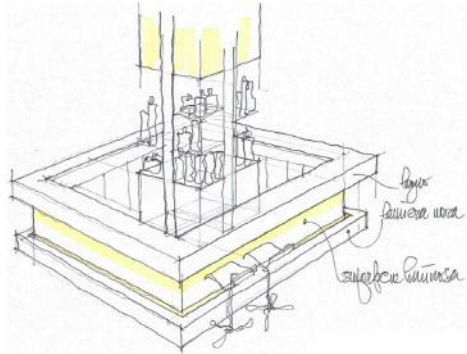
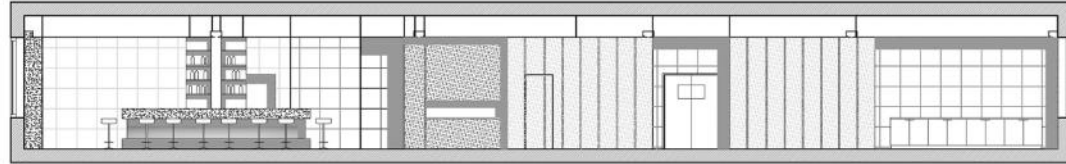




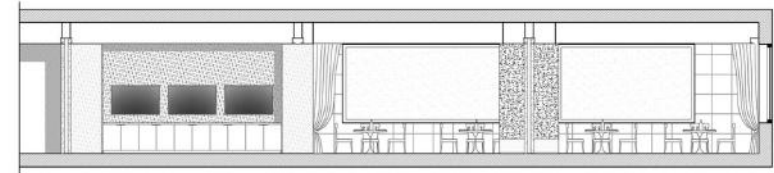
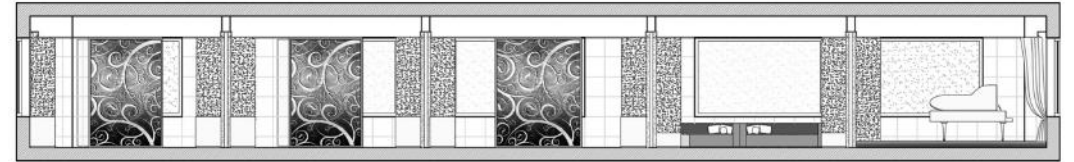
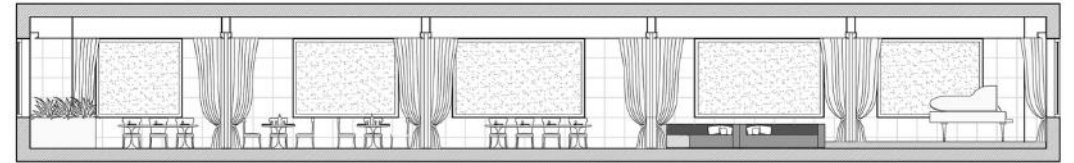








ELEVATION BAR AREA



ELEVATION RESTURANT AREA



PRODUCTS

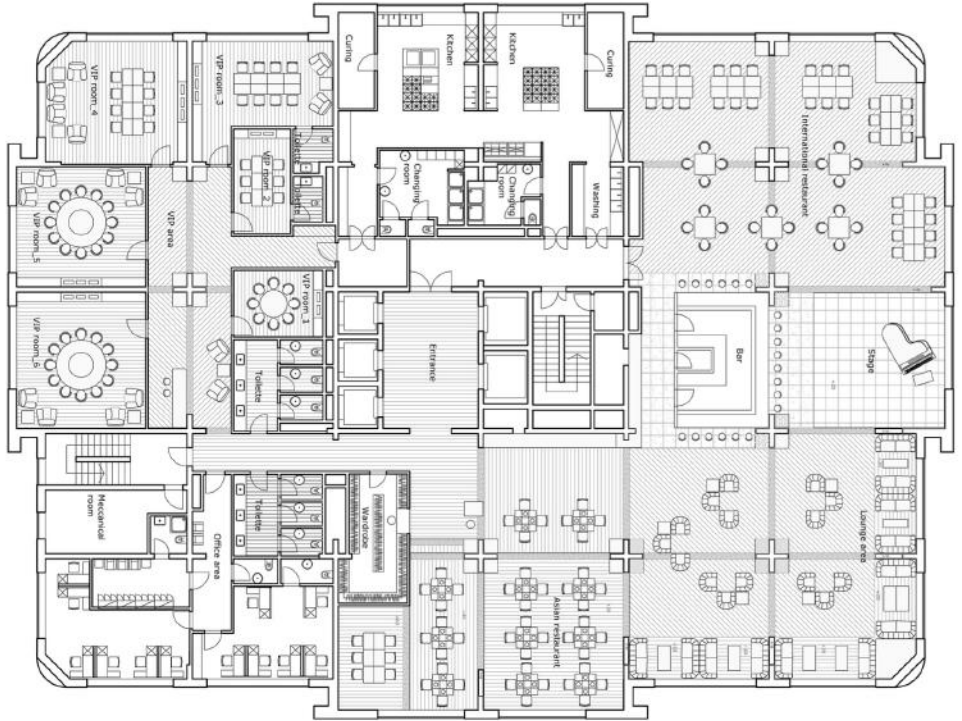


PRODUCTS

Ulaanbataar Restaurant Concept

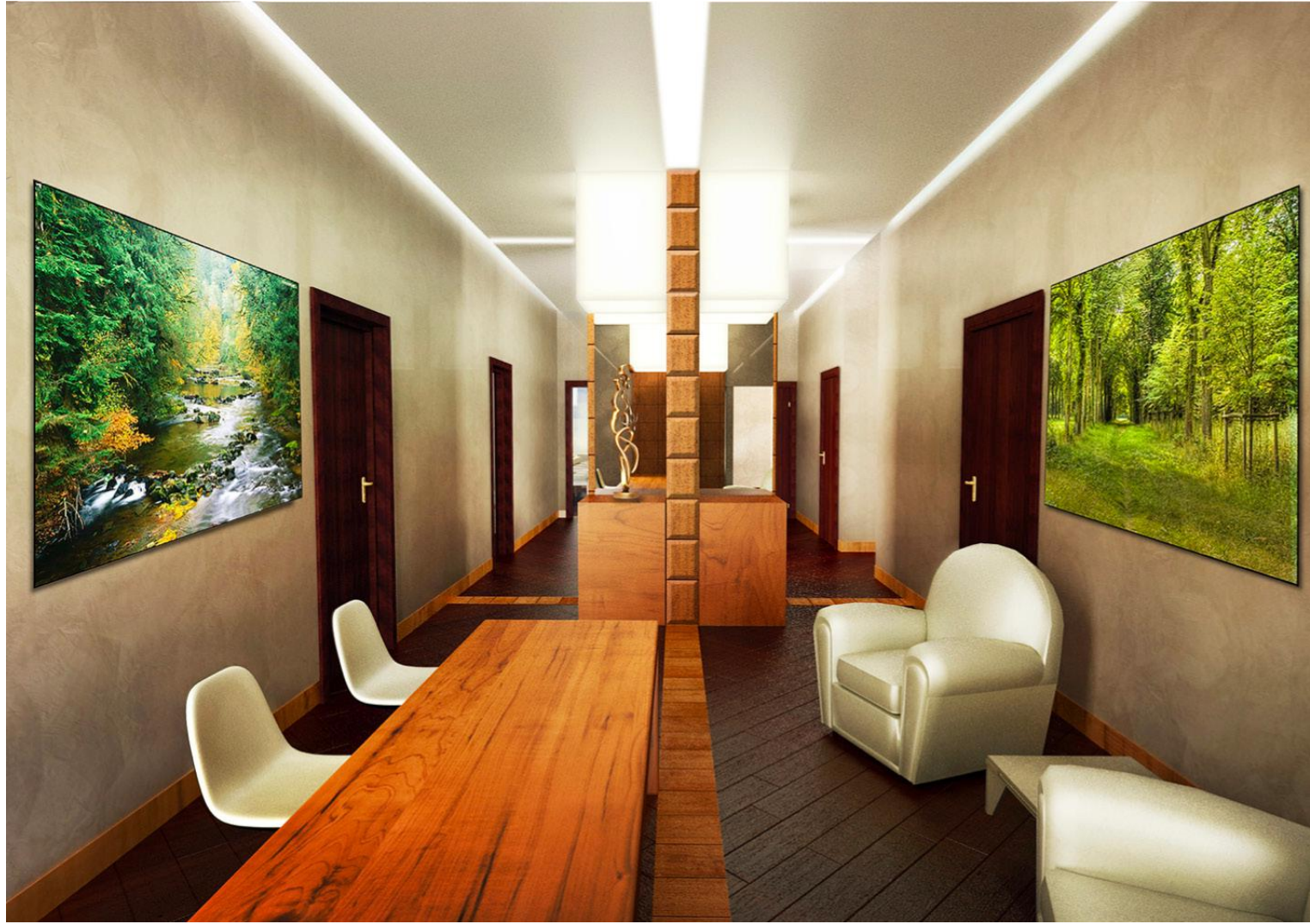
Restaurant, Mongolia
Commercial Project

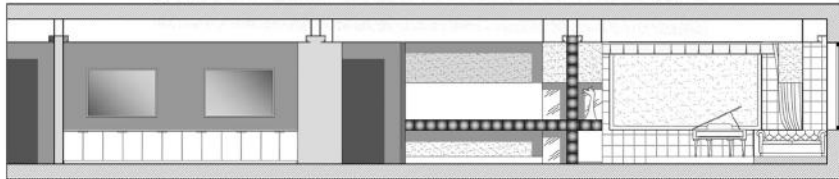
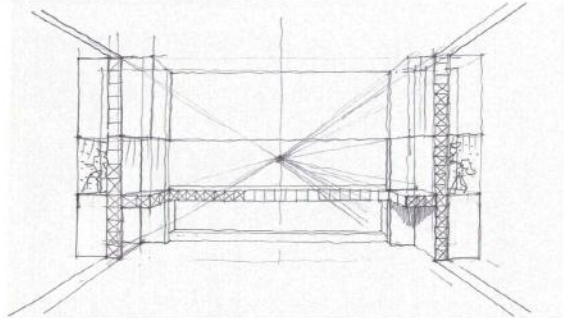
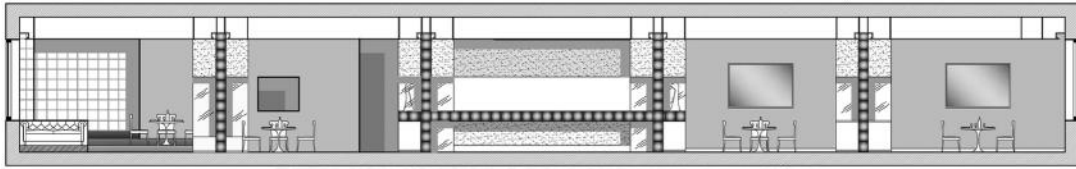






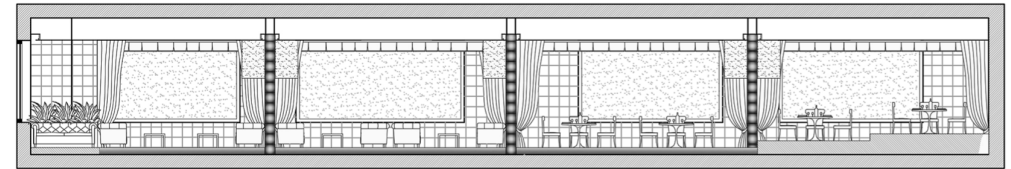
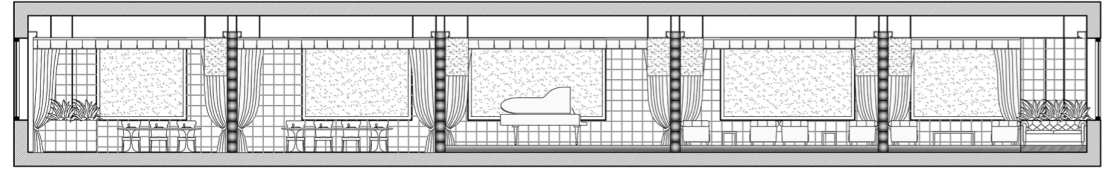






ELEVATION BAR AREA

ELEVATION INTERNATIONAL RESTAURANT / STAGE / LOUNGE AREA



ELEVATION LOUNGE AREA / ASIAN RESTAURANT



PRODUCTS

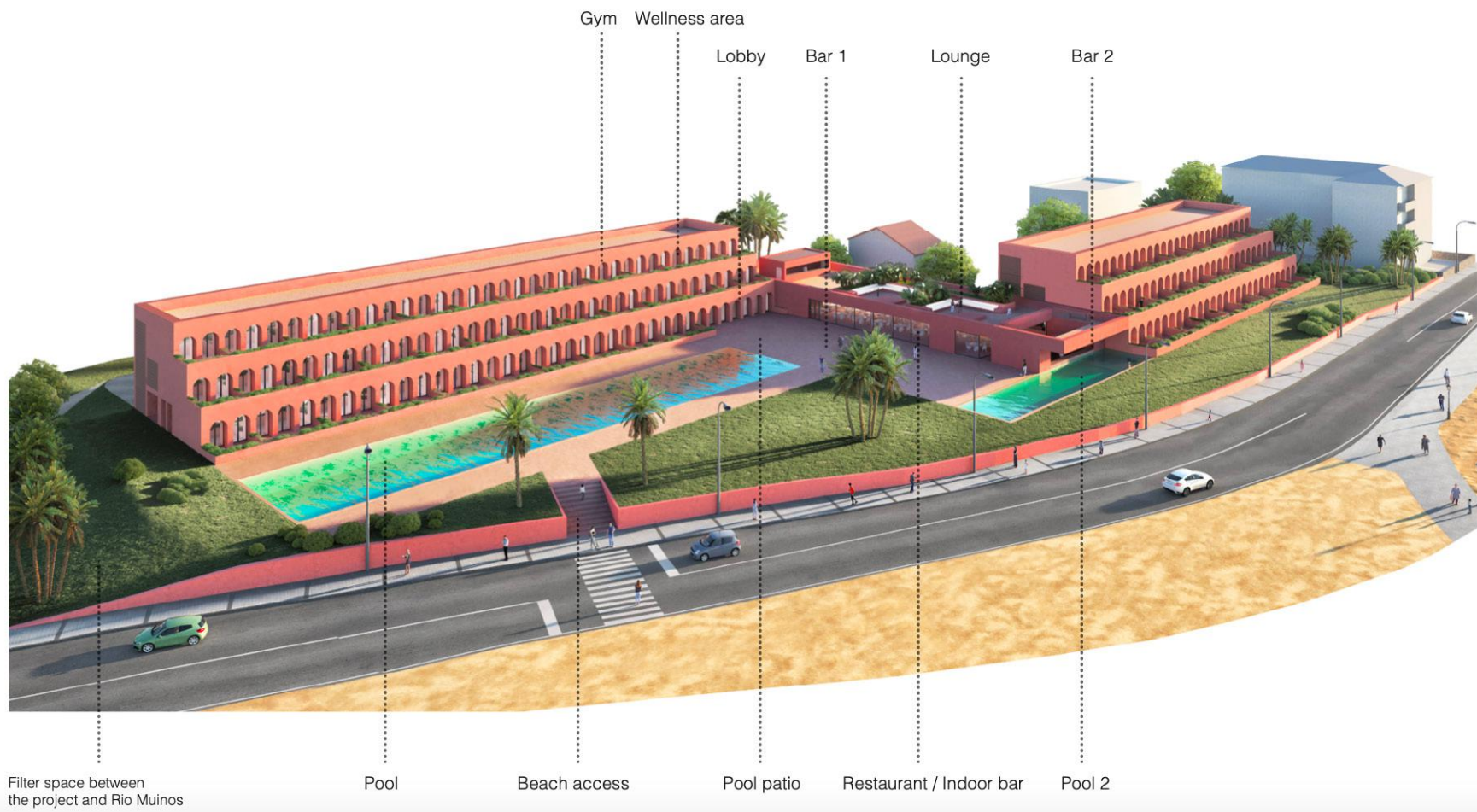


Beatnik Beach House Concept

Hotel, Spain
Commercial Project







Gym Wellness area
Lobby Bar 1 Lounge Bar 2

Filter space between the project and Rio Muinos

Pool

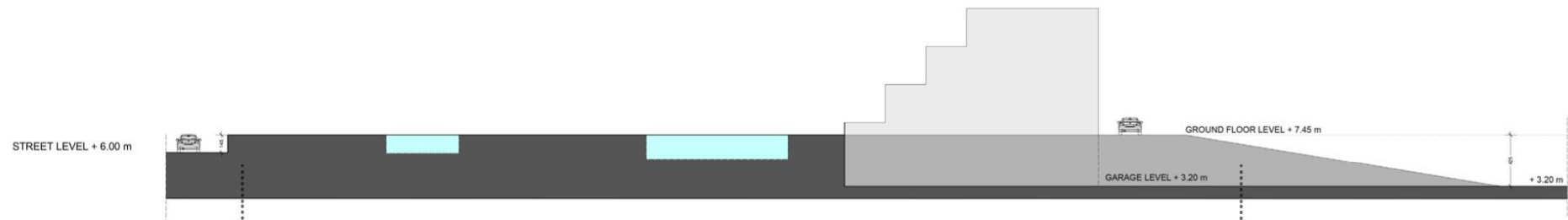
Beach access

Pool patio

Restaurant / Indoor bar

Pool 2

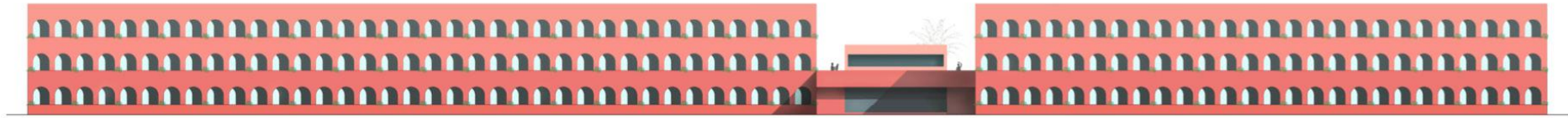




Detail of the Sloping in the west side of the project area



Detail of the Sloping in the East side of the project area



West elevation



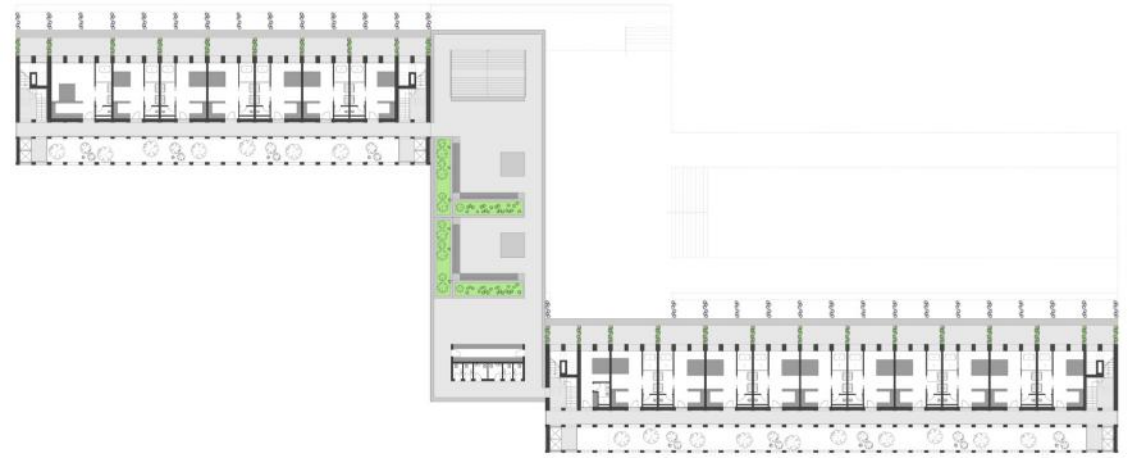
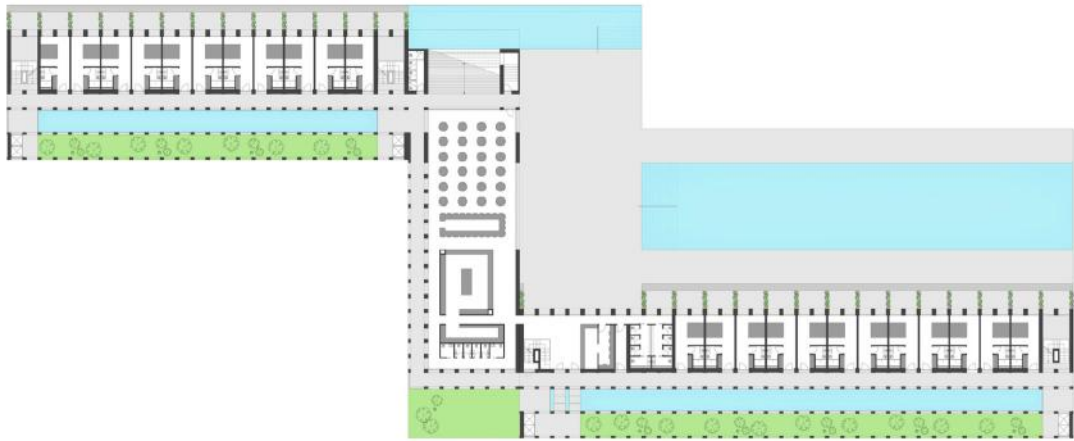
East elevation



North elevation



South elevation



Mongolia Resort Concept

Hotel, Mongolia
Commercial Project







Mariano Comense Pharmacy

Mariano , Italy
Commercial Project







Antwerp Restaurant Concept

Restaurant, Belgium
Commercial Project









Milan Restaurant Concept

Restaurant, Italy
Commercial Project



Atlanta GA Beauty Salon Spa

Salon/Spa, USA
Commercial Project





COLT Architects
Via Melzo 19, 20129 Milan Italy
Via Savona 97 Milan Italy